



PRODUCT DIRECTORY

Why a Maxim Storage Solution?

- Designed and manufactured right here in New Zealand by Kiwis.
- Heavy grade electrogalvanized steel is used for our cabinets.
- They are good looking with clean lines.
- As there's no middleman we can ensure very good value.
- Can be customised to order for little incremental cost.



CONTENTS



04 FILING SYSTEMS

05 EASYGLIDE FILING CABINETS

06 ULTRAGLIDE FILING CABINETS

08 COMPACT FILE CABINETS

09 CODED FILING CABINETS

11 STORAGE SYSTEMS

12 LOCKERS

14 PLAN CABINETS

14 STATIONERY CABINETS

17 FINELINE SHELVING

18 GUN CABINETS

19 MUSEUM + SPECIMEN CABINETS

20 GARAGE + WORKSHOP STORAGE

20 STORAGE CABINET

21 TOOLBOX

21 STORAGE SHELVING

21 TOOL TROLLEY

21 COMPUTER STATION



COLOURS

Choose from one of our colour ranges, or if these don't suit, request a custom finish.

Our standard colour range



Claret Red



Deep Teal



Dunne Matt



Ironstone



Dusk Blue



Midnight Blue



Satin Black



Satin White



Shale Grey

Our bright colour range



Dark Violet



X Orange



Endeavour



W Yellow



Flame



Mannex
Appliance
White



Mamba
Green



Mannex
Black

These are non standard colours. Please check for availability before ordering



Standard on all products is our



L I F E T I M E
W A R R A N T Y

Storage Solutions



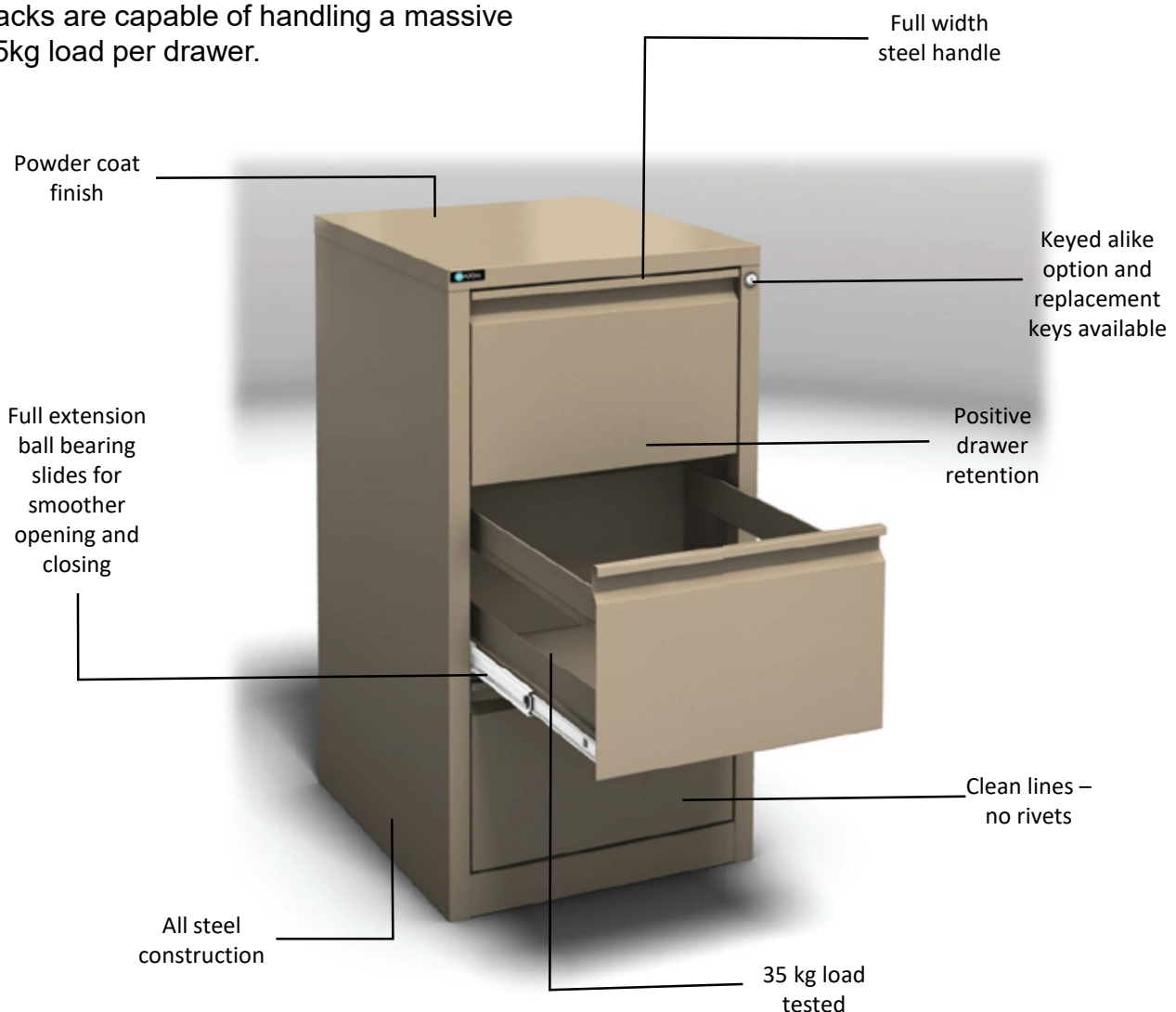
CUSTOM ULTRA GLIDE 4 Drawer shown in Mannex Appliance White, with Perforated Drawer fronts

EASY GLIDE

2, 3 + 4 drawer filing cabinets

The Easy Glide Filing Cabinet is the ideal choice for the home office or small business, combining stylish looks and robust construction.

The Easy Glide has fully spot welded construction for high strength and clean lines. The quiet running, full extension ball bearing tracks are capable of handling a massive 35kg load per drawer.



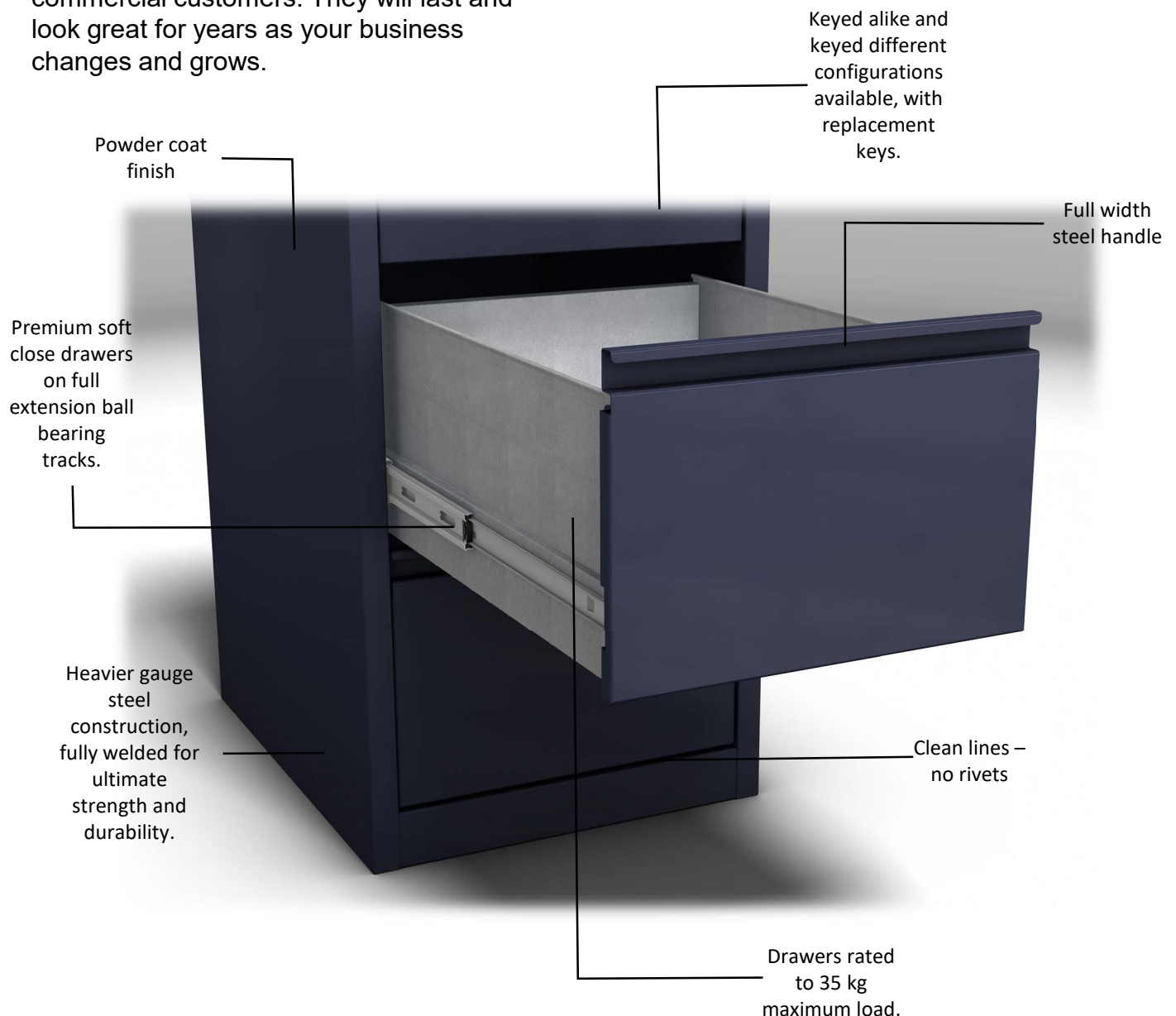
EASY GLIDE 3 Drawer shown in Dunne Matt

ULTRA GLIDE

2, 3 + 4 drawer filing cabinets

The Ultra Glide Filing Cabinet is one of the best premium quality filing cabinets available. They are robust, good looking and made right here in New Zealand.

These cabinets suit a wide range of commercial customers. They will last and look great for years as your business changes and grows.



ULTRA GLIDE 3 Drawer shown in Dusk Blue



Custom Pedestals shown in Satin White & Endeavour with Perforated drawers fronts



Stationary Cupboard shown in Graphite/Flint body, with Ghost Grey & Flame doors



Compact shown in Satin Black body, with Yellow, & Red drawers



2 DRAWER EASYGLIDE
Shown in Satin Black
690 H x 487 W x 565 D mm



3 DRAWER EASYGLIDE
Shown in Dusk Blue
985 H x 487 W x 565 D mm



4 DRAWER EASYGLIDE
Shown in Claret Red
1280 H x 487 W x 565 D mm



2 DRAWER ULTRAGLIDE
Shown in Deep Teal
690 H x 486 W x 615 D mm



3 DRAWER ULTRAGLIDE
Shown in Ironstone
985 H x 486 W x 615 D mm



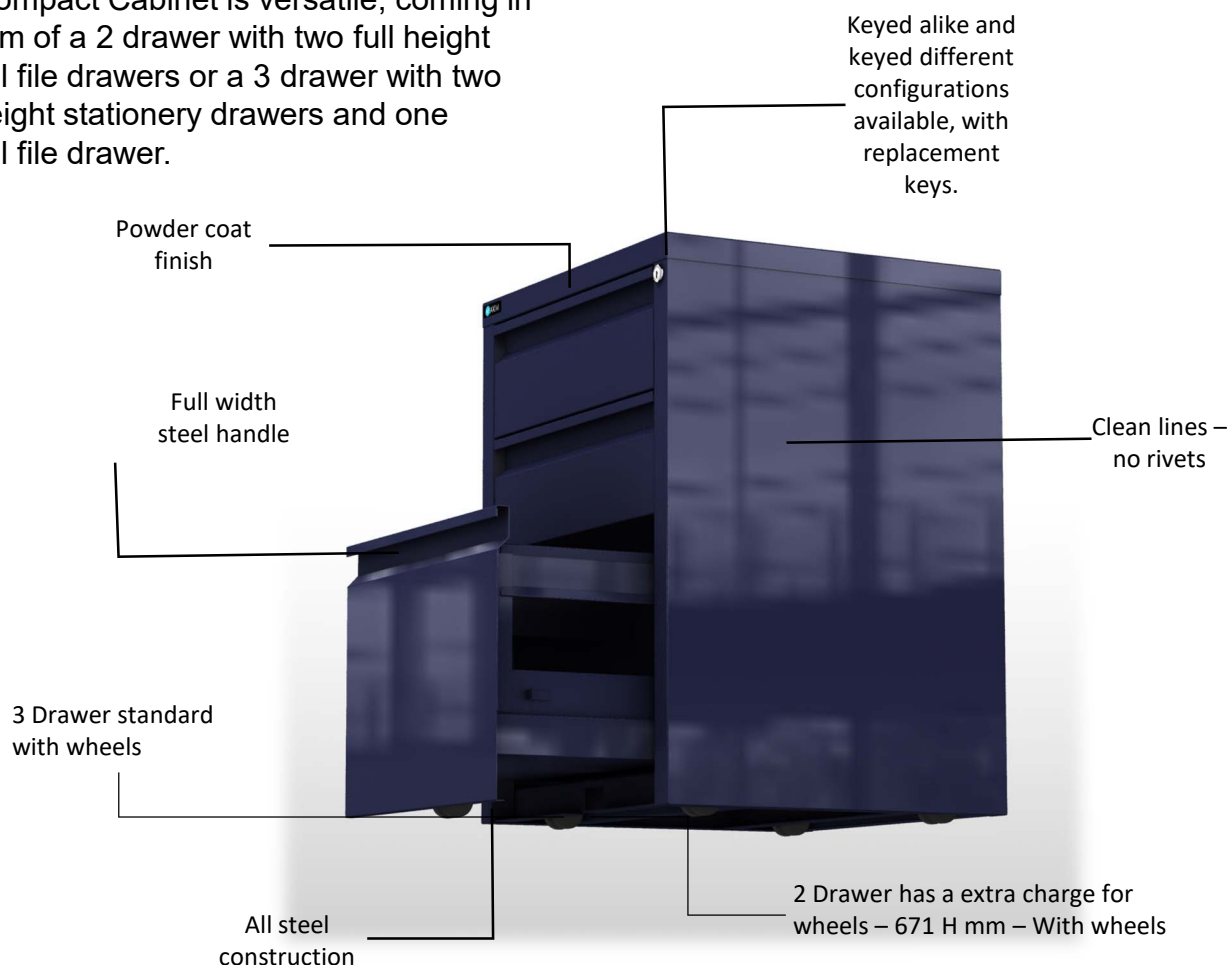
4 DRAWER ULTRAGLIDE
Shown in Dunne Matt
1280 H x 486 W x 615 D mm

COMPACT

2 + 3 drawer filing cabinets

The Compact Filing Cabinet provides the perfect solution for workstation storage; they are designed to fit comfortably under a desk and are available with or without wheels for maximum flexibility.

The Compact Cabinet is versatile, coming in the form of a 2 drawer with two full height vertical file drawers or a 3 drawer with two half height stationery drawers and one vertical file drawer.



COMPACT 3 Drawer shown in Midnight Blue

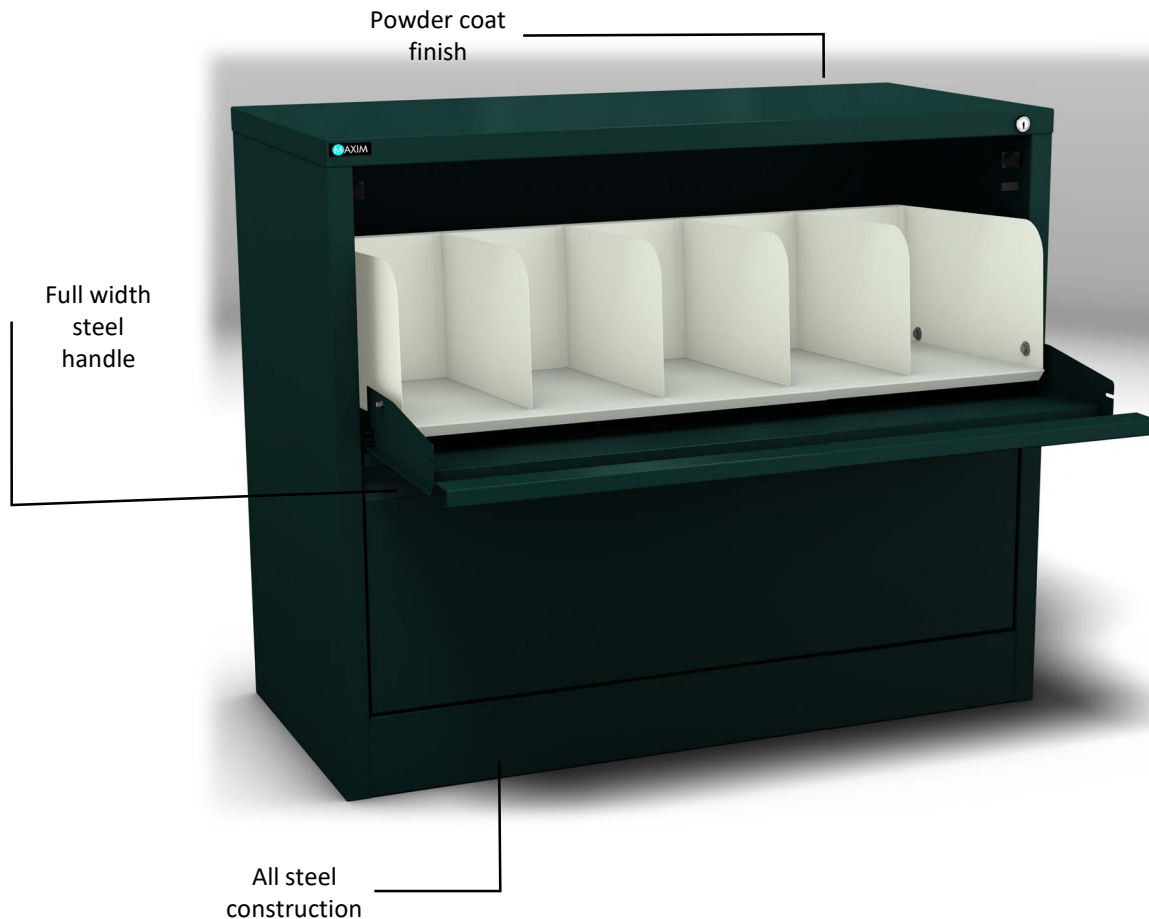
CODED FILE

2, 3, 4 + 5 drawer cabinets

The Coded Filing Cabinet is designed for use with tab coded filing systems.

Each self offers 860mm width of coded file storage with inbuilt divider to support files.

- Locking as standard
- With drawer open 738mm new cabinet depth
- Custom finishes on request,
- White divider inside standard or powdered coated to match body



CODED FILE 2 Drawer shown in Deep Teal



2 DRAWER COMPACT

Shown in Shale Grey without wheels
663 H x 487 W x 467 D mm



3 DRAWER COMPACT

Shown in Midnight Blue with wheels
671 H x 487 W x 467 D mm



2 DRAWER CODED FILE

Shown in Satin Black
807 H x 973 W x 456 D mm



3 DRAWER CODED FILE

Shown in Satin Black
1142 H x 973 W x 456 D mm



4 DRAWER CODED FILE

Shown in Claret Red
1477 H x 973 W x 456 D mm



5 DRAWER CODED FILE

Shown in Dunne Matt
1812 H x 973 W x 456 D mm



Lockers 2 Tier Step shown in Ironstone bodies & Lyrica Strip doors



Lockers 3 Tier shown in Endeavour with Perforated doors, & custom stand.

LOCKERS

1, 2, 3 + 4 tier lockers

A Maxim locker is the ideal choice for anyone needing quality, secure storage. Combining stylish looks and robust construction, they are ventilated at the top and bottom of all doors.

The lockers are available in one, two, three and four tier options and these are fully assembled and ready to use. We can configure in banks of 2, 3 or 4 or as stand-alone units.

Two tier step lockers are also available, offering clothes hanging functionality in a two tier format.

All lockers can be supplied with clothes hanger bars and internal shelves as needed. Lockers are available with key lock or hasp and staple closure.

Maxim also makes custom lockers in a full range of sizes with many cost effective options to suit. Custom sizes are available on request.

Some custom options include; document holders, name tag holders, additional shelves, boot racks, mirrors, coat hooks, towel rails, sturdy changing seats and sloping easy clean tops.

Custom colours to suit corporate or office décor. Also door perforations can be customised from a large range of tooling. Please call to discuss a custom design to suit your needs.



LOCKER 1 Tier shown in Claret Red
LOCKER 2 Tier Step shown in Dusk Blue



1 TIER LOCKER

Shown in Satin White
1800 H x 300, 340, or
375 W x 450 D mm



2 TIER LOCKER

Shown in Claret Red
1800 H x 300, 340, or
375 W x 450 D mm



3 TIER LOCKER

Shown in Midnight Blue
1800 H x 300, 340, or
375 W x 450 D mm



4 TIER LOCKER

Shown in Ironstone
1800 H x 300, 340, or
375 W x 450 D mm



2 TIER STEP LOCKER

Shown in Midnight Blue
1800 H x 375 W x 450 D mm

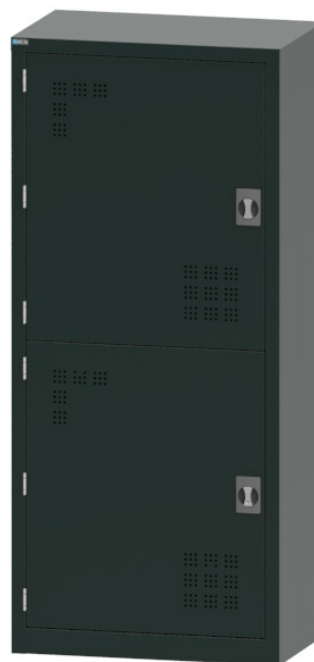


APPAREL LOCKER

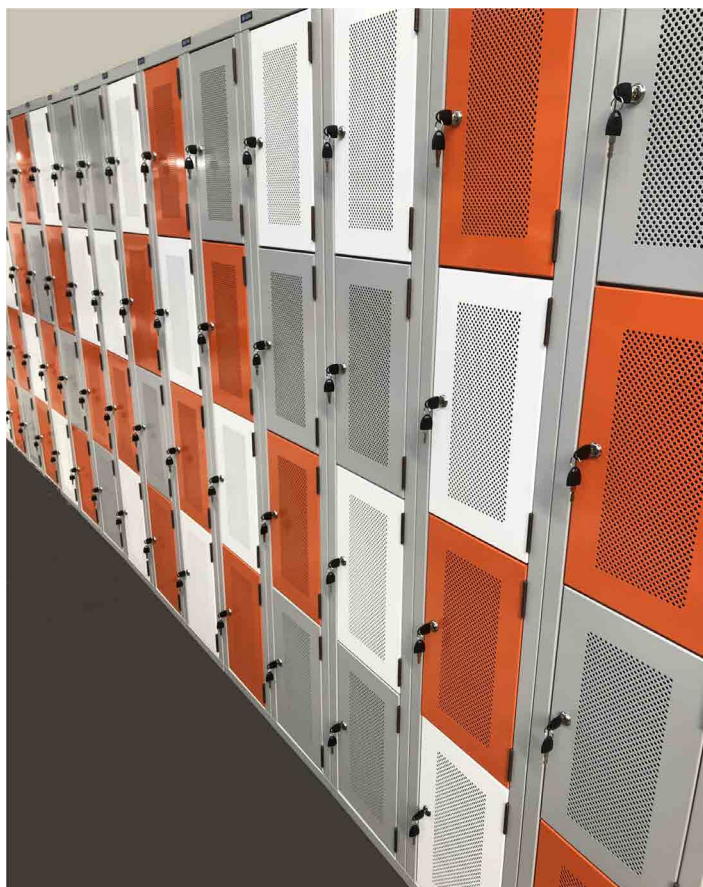
Shown in Shale Grey
1800 H x 300, 340, or
375 W x 450 D mm



1 TIER JUMBO LOCKER
 Shown in Midnight Blue
 More tiers also available.
 2000 H x 440 W x 650 D mm



2 TIER PPE LOCKER
 Shown in Ironstone
 1800 H x 800 W x 489 D mm



LOCKER 4 Tier Banks in custom colours & perforated doors



LOCKER 2 Tier Bank of 5 shown in Claret Red

PLAN CABINETS

5, 10 + 12 drawer A0 + A1 cabinets

Designed to hold A1 and A0 plans, Maxim plan cabinets come in 5, 10 and 12 drawer sizes, or can be customised to meet your storage needs. This range of storage solutions is used extensively in the construction industry for building and architectural plans as well as in museum and scientific departments as sample drawer cabinets, especially in the fields of palaeontology and geology.

Drawer Depth:

A1: 75mm H x 851mm W x 611mm D

AO: 72mm H x 1201mm W x 860mm D

Drawer Sides: 50 H mm

AO Load capacity 16kgs per drawer
(200 sheets of 80 GSM paper).



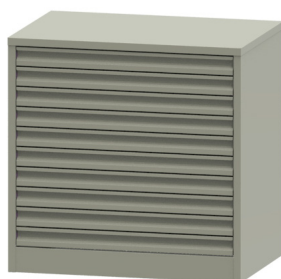
PLAN CABINET A1 10 Drawer shown in Dunne Matt



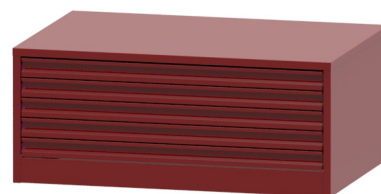
PLAN CABINET A0 5 Drawer shown in Shale Grey



5 DRAWER A1 PLAN CABINET
Shown in Satin Black
539 H x 950 W x 658 D mm



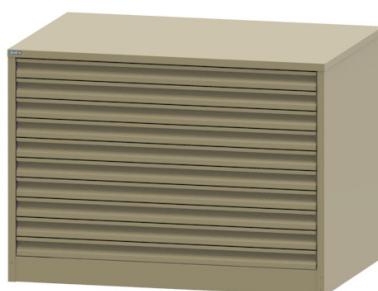
10 DRAWER A1 PLAN CABINET
Shown in Shale Grey
939 H x 950 W x 648 D mm



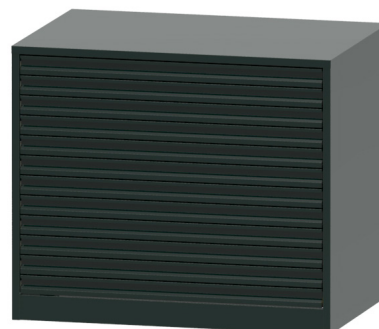
5 DRAWER A0 PLAN CABINET
Shown in Claret Red
539 H x 1298 W x 897 D mm



7 DRAWER A0 PLAN CABINET
Shown in Midnight Blue
(custom size cabinet)
697 H x 1298 W x 896 D mm



10 DRAWER A0 PLAN CABINET
Shown in Dunne Matt
935 H x 1298 W x 897 D mm



12 DRAWER A0 PLAN CABINET
Shown in Ironstone
1099 H x 1298 W x 897 D mm

STATIONERY

Full + half height cabinets

The Maxim stationery cabinet range offers versatile and secure storage of stationery and supplies in an endless list of applications.

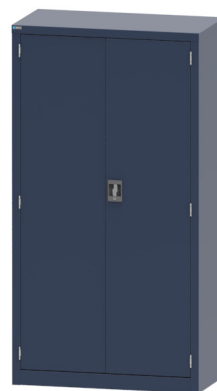
Cabinets are offered in full and half height configurations with fully adjustable shelving within. Three point locking is implemented for the security of the contents of your cabinet.

Full height cabinets are supplied with three shelves and half height cabinets with one. Additional shelves are sold separately as required.



HALF HEIGHT STATIONERY CABINET

Shown in Ironstone
987 H x 956 W x 489 D mm



FULL HEIGHT STATIONERY CABINET

Shown in Midnight Blue
1802 H x 956 W x 489 D mm

FINELINE

Full + half height shelving

The Maxim Fineline shelving range comes standard as a full height unit with 4 shelves, and can be customised to meet your storage requirements. Each sturdy shelf is fully height adjustable in 25 mm increments. They are of welded steel construction and have adjustable shelves. Also available in half height with 1 shelf. Additional shelves are sold separately as required.



HALF HEIGHT FINELINE SHELF

Shown in Claret Red
986 H x 936 W x 328 D mm



FULL HEIGHT FINELINE SHELF

Shown in Ironstone
1801 H x 937 W x 328 D mm

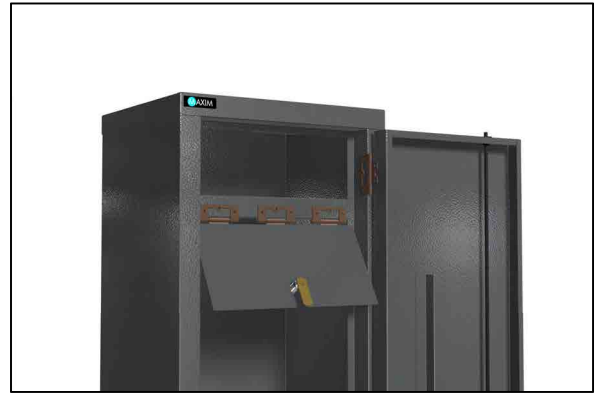


FINELINE Full Height Storage Shelf
shown in Dunne Matt

GUN CABINET

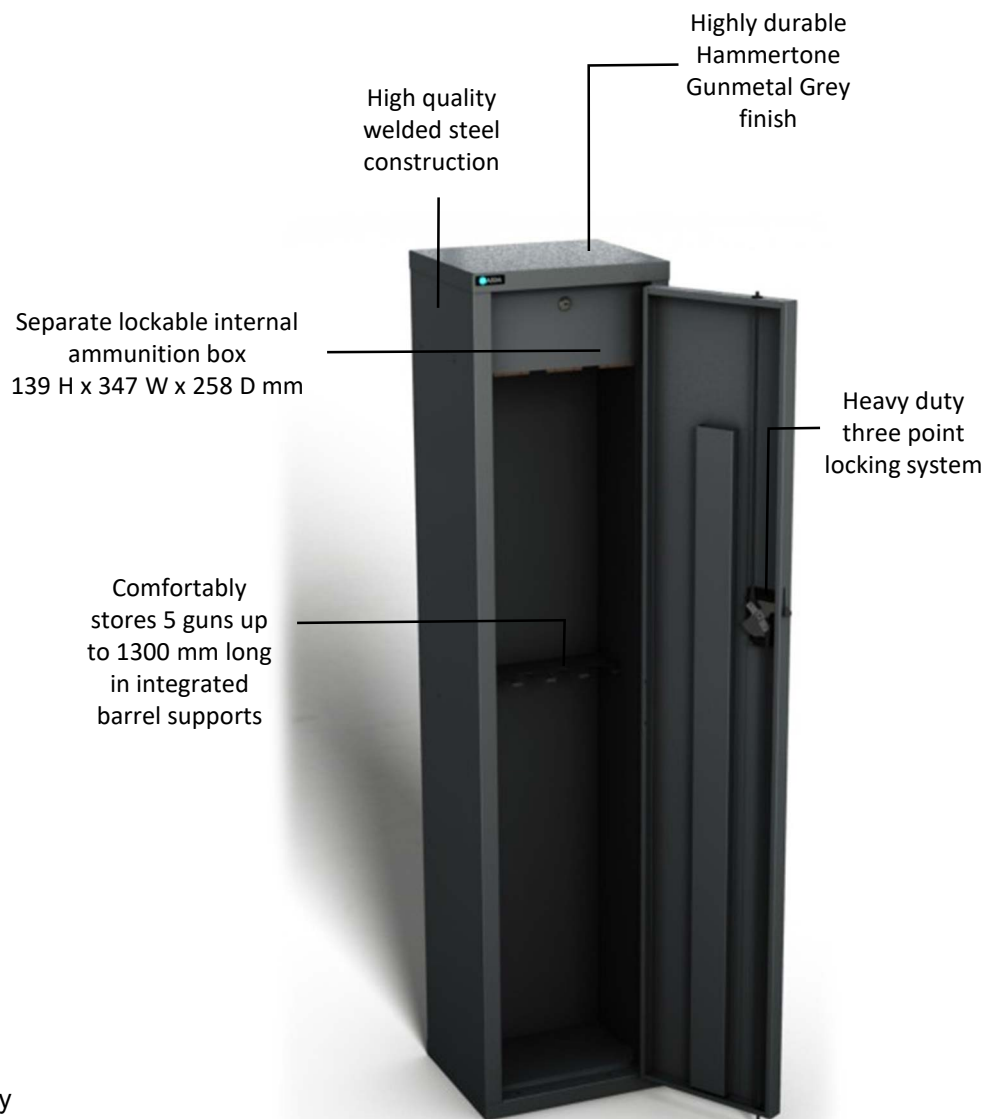
Category 'A' Gun Safe

The Maxim Gun Cabinet is a category 'A' cabinet. It comfortably stores 5 guns, up to a maximum length of 1300mm, with integrated barrel supports, with a separate internal lockable ammunition box. The main door has a heavy duty three point locking system.



GUN CABINET

Shown in Hammertone Grey
1500 H x 350 W x 300 D mm



GUN CABINET shown in Hammertone Grey

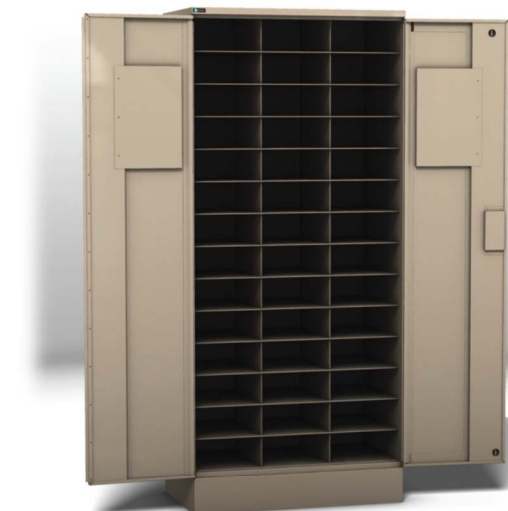
MUSEUM & SPECIMEN

Custom designed archive cabinets

We are able to offer museums and institutions archive storage solutions tailored to individual specifications. All our products are designed and manufactured in-house, which allows us to control quality every step of the way. All Herbariums have rubber seals to protect the contents against moisture and humidity. We fully spot-weld for strength and our cabinets are powder coated for a clean finish.

Our team has a wide range of metalworking skills and experience in mechanical engineering. We can work with you to develop cost effective products that suits your specialised needs. Our design and prototyping service uses the latest Solid Edge 3D modelling software. This is integrated with Meta CAM software to provide a seamless service from concept design to finished product. As an added reassurance, we have the latest photo-realistic rendering software, Autodesk Showcase, to generate images - so you can see exactly the finished product.

Contact Maxim Storage Solutions for your tailor-made solution.



HISTORICAL DOCUMENTS - SCIENTIFIC SPECIMENS - GEOLOGICAL SAMPLES - BIOLOGICAL SPECIMENS



Garage + Workshop

STORAGE CABINET Full Height shown in Satin Black body & Shale Grey doors

STORAGE CABINET Half Height shown in Satin Black body & Shale Grey doors

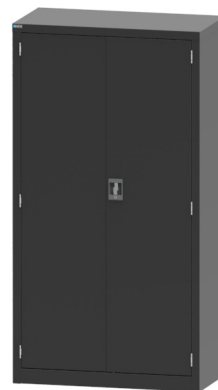
TOOLBOX 6 Drawer shown in Satin Black body & Shale Grey drawers

STORAGE SHELF Full Height shown in Satin Black body & Shale Grey shelves



HALF HEIGHT STORAGE CABINET

Shown in Claret Red
987 H x 956 W x 489 D mm



FULL HEIGHT STORAGE CABINET

Shown in Ironstone
1802 H x 956 W x 489 D mm



6 DRAWER TOOLBOX

Shown in Shale Grey
1015 H x 800 W x 470 D mm



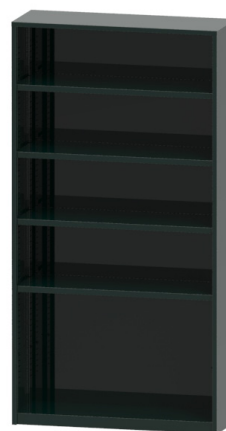
CUSTOM TOOLBOX

Shown in Dusk Blue
1015 H x 800 W x 470 D mm



HALF HEIGHT STORAGE SHELF

Shown in Claret Red
986 H x 936 W x 328 D mm



FULL HEIGHT STORAGE SHELF

Shown in Deep Teal
1801 H x 937 W x 328 D mm



CUSTOM TOOL TROLLEY

Shown in Dusk Blue
1015 H x 800 W x 470 D mm



COMPUTER WORKSTATION

Shown in Claret Red
1015 H x 800 W x 470 D mm



CONTACT US

Call: 03 389 9081

Email: maxim@maxfiling.co.nz

Visit: 11-23 Columbia Avenue, Christchurch