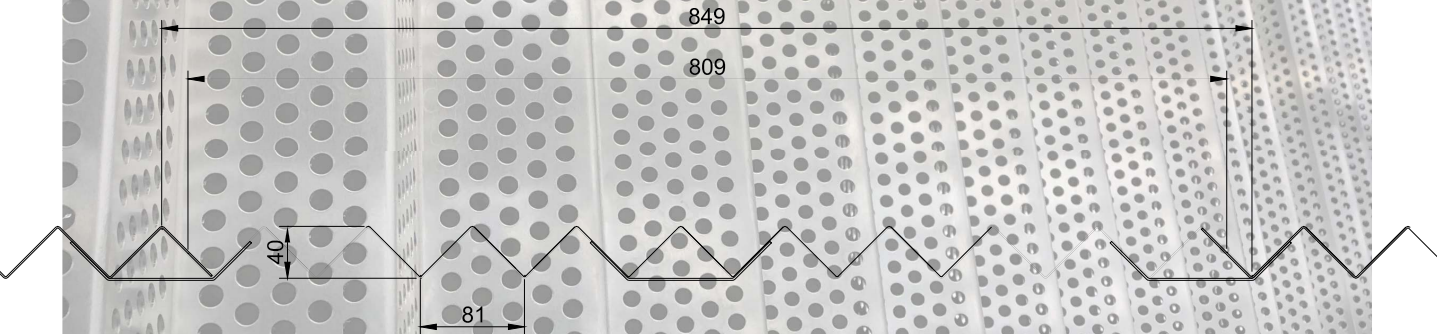


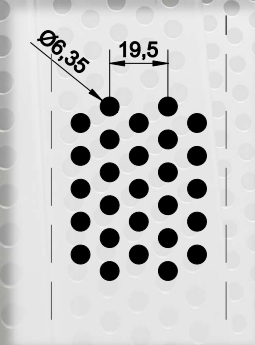
Perforated Corrugate

Tititea - a striking architectural cladding designed for exterior installation.

Material = 1.6mm Aluminium with Powder Coated Finish



Perforations are R064C30C that has 6mm round holes and 30% open area.



Architecturally designed perforated cladding.

Standard lengths available – 2400mm, 3000mm & 3600mm

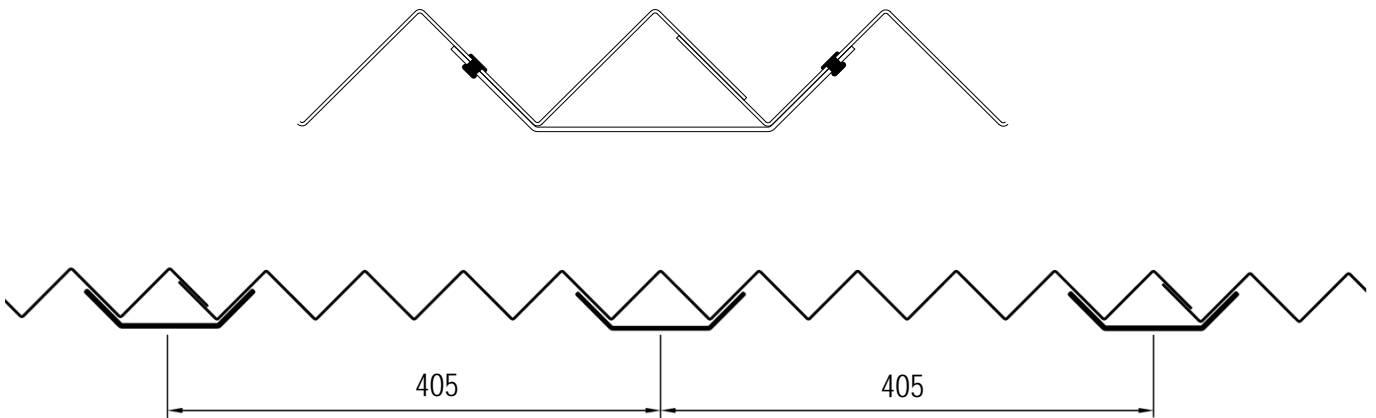
Mounting

Tititea perforated corrugate is best installed as vertical architectural cladding.

Maximum recommended spans are 1200mm.

Mounting brackets are supplied for mounting at nominal 405mm centres.

Mounting Brackets to be screw fixed to purlins or rails with 12 or 14 gauge screws. Fastening of the perforated corrugate to the brackets with colour matched 5-3 pop-rivets.



Colour Finishes

Tititea perforated corrugate is offered with a pretreat and powder coat finish.

Dulux Duralloy powder options are available for AAMA 2603 performance.

Dulux Duratec powder options are available for AAMA 2604 performance.

The standard range of colour options in these powder can be provided.

Tititea is a mountain 3,033m high, set within Otago's Mount Aspiring National Park. It is the country's highest peak outside the Aoraki / Mount Cook region and home of the Volta Glacier. Tititea translates as "Glistening Peak". This was first ascended on 23 November 1909 by Major Bernard Head and his team. It provides an aspirational namesake for this architectural product.